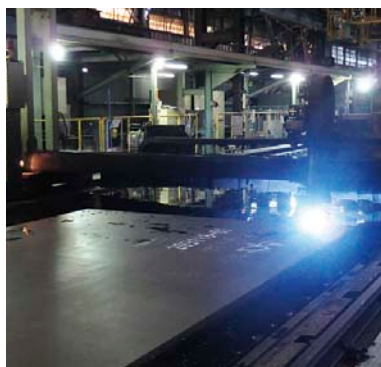
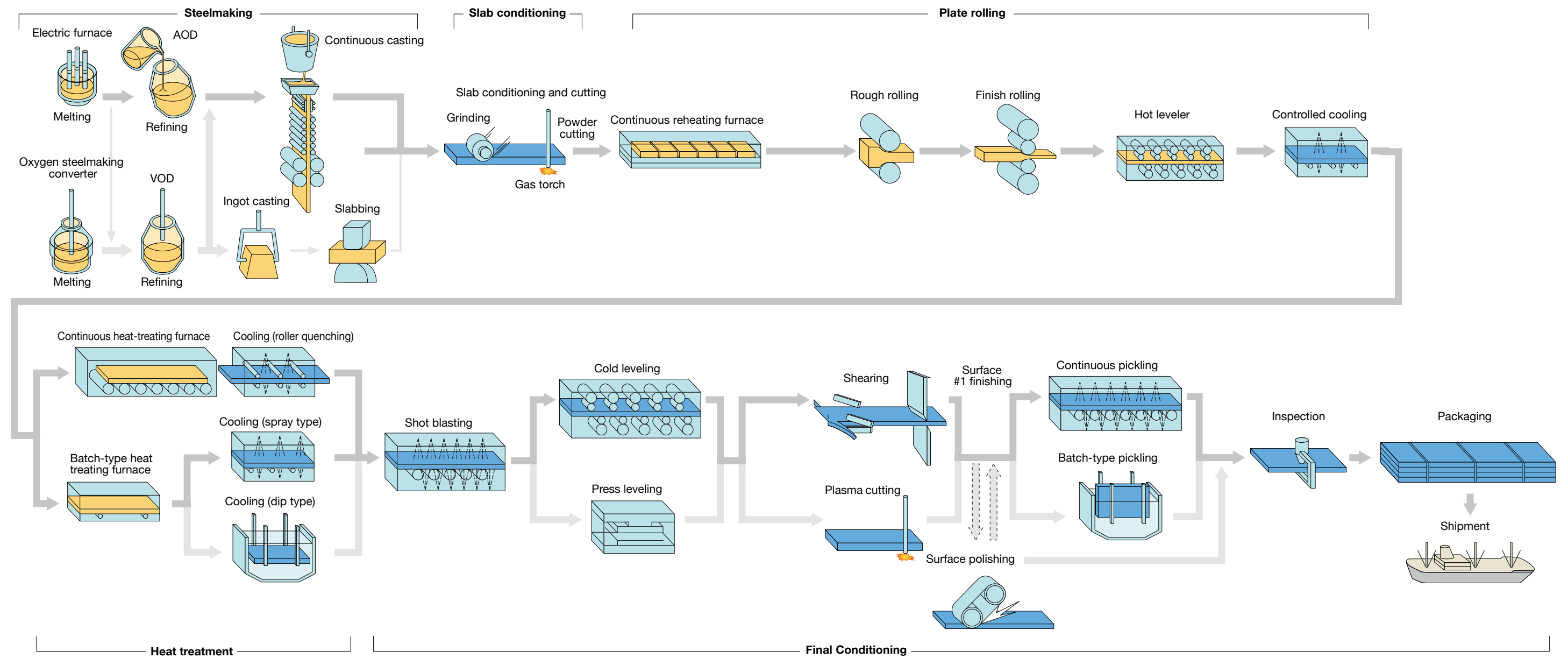


Manufacturing Flow

VOD : Vacuum Oxygen Decarburization
 AOD : Argon Oxygen Decarburization
 RQ : Roller Quench



Electric furnace

Continuous casting

Plate rolling

Heat treating furnace

Cold leveling

Plasma cutting

Continuous pickling

Production

Available Product Grades

Stainless Steel Group	Grade				Chemical Composition (%)									Mechanical Properties					
	ASTM (A240M)	EN Number	Symbol of Grades (NSSC)	Others (JIS)	C	Si	Mn	P	S	Ni	Cr	Mo	Others	Tensile Properties (1MPa=1N/mm ²)			Hardness		Bend Test
														Yield Strength MPa	Tensile Strength MPa	Elongation %	HBW	HRBW	
Austenitic Steels	304	(1.4301)		(SUS304)	≤0.07	≤0.75	≤2.00	≤0.045	≤0.030	8.0/10.5	17.5/19.5	—	N≤0.10	≥205	≥515	≥40	≤201	≤92	—
	304H				0.04/0.10	≤0.75	≤2.00	≤0.045	≤0.030	8.0/10.5	18.0/20.0	—		≥205	≥515	≥40	≤201	≤92	—
	304L	(1.4307)		(SUS304L)	≤0.030	≤0.75	≤2.00	≤0.045	≤0.030	8.0/12.0	17.5/19.5	—	N≤0.10	≥170	≥485	≥40	≤201	≤92	—
	304N	(1.4315)		(SUS304N1)	≤0.08	≤0.75	≤2.00	≤0.045	≤0.030	8.0/10.5	18.0/20.0	—	N:0.10/0.16	≥240	≥550	≥30	≤217	≤95	—
	304LN	(1.4311)		(SUS304LN)	≤0.030	≤0.75	≤2.00	≤0.045	≤0.030	8.0/12.0	18.0/20.0	—	N:0.10/0.16	≥205	≥515	≥40	≤217	≤95	—
	309S	(1.4950)		(SUS309S)	≤0.08	≤0.75	≤2.00	≤0.045	≤0.030	12.0/15.0	22.0/24.0	—		≥205	≥515	≥40	≤217	≤95	—
	310S	(1.4951)		(SUS310S)	≤0.08	≤1.50	≤2.00	≤0.045	≤0.030	19.0/22.0	24.0/26.0	—		≥205	≥515	≥40	≤217	≤95	—
	316	(1.4401)		(SUS316)	≤0.08	≤0.75	≤2.00	≤0.045	≤0.030	10.0/14.0	16.0/18.0	2.00/3.00	N≤0.10	≥205	≥515	≥40	≤217	≤95	—
	316L	(1.4404)		(SUS316L)	≤0.030	≤0.75	≤2.00	≤0.045	≤0.030	10.0/14.0	16.0/18.0	2.00/3.00	N≤0.10	≥170	≥485	≥40	≤217	≤95	—
	316H				0.04/0.10	≤0.75	≤2.00	≤0.045	≤0.030	10.0/14.0	16.0/18.0	2.00/3.00		≥205	≥515	≥40	≤217	≤95	—
	316LN	(1.4406)		(SUS316LN)	≤0.030	≤0.75	≤2.00	≤0.045	≤0.030	10.0/14.0	16.0/18.0	2.00/3.00	N:0.10/0.16	≥205	≥515	≥40	≤217	≤95	—
	317L	(1.4438)		(SUS317L)	≤0.030	≤0.75	≤2.00	≤0.045	≤0.030	11.0/15.0	18.0/20.0	3.0/4.0	N≤0.10	≥205	≥515	≥40	≤217	≤95	—
	317LN	(1.4434)		(SUS317LN)	≤0.030	≤0.75	≤2.00	≤0.045	≤0.030	11.0/15.0	18.0/20.0	3.0/4.0	N:0.10/0.22	≥240	≥550	≥40	≤217	≤95	—
	321	(1.4541)		(SUS321)	≤0.08	≤0.75	≤2.00	≤0.045	≤0.030	9.0/12.0	17.0/19.0	—	N≤0.10 Ti:5×(C+N) /0.70	≥205	≥515	≥40	≤217	≤95	—
	347	(1.4550)		(SUS347)	≤0.08	≤0.75	≤2.00	≤0.045	≤0.030	9.0/13.0	17.0/19.0	—	Nb:10×C/1.00	≥205	≥515	≥40	≤201	≤92	—
	N08904 (904L)	(1.4539)		(SUS890L)	≤0.020	≤1.00	≤2.00	≤0.045	≤0.035	23.0/28.0	19.0/23.0	4.00/5.00	N≤0.10 Cu:1.0/2.0	≥220	≥490	≥35	—	≤90	—
	S31254	(1.4547)	(NSSC 270)		≤0.020	≤0.80	≤1.00	≤0.030	≤0.010	17.5/18.5	19.5/20.5	6.0/6.5	N:0.18/0.25 Cu:0.50/1.00	≥310	≥655	≥35	≤223	≤96	—
		(NSSC 170)	SUS317J2	≤0.06	≤1.50	≤2.00	≤0.045	≤0.030	12.00/16.00	23.00/26.00	0.50/1.20	N:0.25/0.40	≥345	≥690	≥40	≤250	≤100	—	

Available Product Grades

Stainless Steel Group	Grade				Chemical Composition (%)									Mechanical Properties					
	ASTM (A240M)	EN Number	Symbol of Grades (NSSC)	Others (JIS)	C	Si	Mn	P	S	Ni	Cr	Mo	Others	Tensile Properties (1MPa=1N/mm ²)			Hardness		Bend Test
														Yield Strength MPa	Tensile Strength MPa	Elongation %	HBW	HRBW	
Ferritic Steels	405	(1.4002)		(SUS405)	≤0.08	≤1.00	≤1.00	≤0.040	≤0.030	≤0.60	11.5/14.5	—	Al:0.10/0.30	≥170	≥415	≥20	≤179	≤88	*5
	430	(1.4016)		(SUS430)	≤0.12	≤1.00	≤1.00	≤0.040	≤0.030	≤0.75	16.0/18.0	—		≥205	≥450	≥22	≤183	≤89	*5
			(NSSC 190L)	SUS444	≤0.025	≤1.00	≤1.00	≤0.040	≤0.030	*1	17.00/20.00	1.75/2.50	*2	≥245	≥410	≥20	≤217	≤96	*6
			(NSSC 410W)	SUS410L	≤0.030	≤1.00	≤1.00	≤0.040	≤0.030	*1	11.00/13.50	—		≥195	≥360	≥22	≤183	≤88	*6
		(NSSC 409L)	SUH409L	≤0.030	≤1.00	≤1.00	≤0.040	≤0.030	*1	10.50/11.75	—	Ti:6(C+N)/0.75	≥175	≥360	≥25	≤162	≤80	*7	
Martensitic Steels	(410)	(1.4006)		SUS410	≤0.15	≤1.00	≤1.00	≤0.040	≤0.030	*1	11.50/13.50	—		≥205	≥440	≥20	≤201	≤93	*6
	410S	(1.4000)		(SUS410S)	≤0.08	≤1.00	≤1.00	≤0.040	≤0.030	≤0.60	11.5/13.5	—		≥205	≥415	≥22	≤183	≤89	*5
Austenitic-Ferritic Steels	S32101**	(1.4162)			≤0.040	≤1.00	4.00/6.00	≤0.040	≤0.030	1.35/1.70	21.0/22.0	0.10/0.80	N:0.20/0.25 Cu:0.10/0.80	≥450	≥650	≥30	≤290	—	—
	S82122		(NSSC 2120)		≤0.030	≤0.75	2.0/4.0	≤0.040	≤0.020	1.5/2.5	20.5/21.5	≤0.60	N:0.15/0.20 Cu:0.50/1.50	≥400	≥600	≥30	≤290	≤32 (HRC)	—
	S32304	(1.4362)			≤0.030	≤1.00	≤2.50	≤0.040	≤0.030	3.0/5.5	21.5/24.5	0.05/0.60	N:0.05/0.20 Cu:0.05/0.60	≥400	≥600	≥25	≤290	≤32 (HRC)	—
	S31803	(1.4462)	(NSSC DX1)	(SUS329J3L)	≤0.030	≤1.00	≤2.00	≤0.030	≤0.020	4.5/6.5	21.0/23.0	2.5/3.5	N:0.08/0.20	≥450	≥620	≥25	≤293	≤31 (HRC)	—
	S32205	(1.4462)			≤0.030	≤1.00	≤2.00	≤0.030	≤0.020	4.5/6.5	22.0/23.0	3.0/3.5	N:0.14/0.20	≥450	≥655	≥25	≤293	≤31 (HRC)	—
	S32760	(1.4501)			≤0.030	≤1.00	≤1.00	≤0.040	≤0.020	6.0/8.0	24.0/26.0	3.0/4.0	*3	≥550	≥750	≥25	≤270	—	—
	S32750	(1.4410)			≤0.030	≤0.80	≤1.20	≤0.035	≤0.020	6.0/8.0	24.0/26.0	3.0/5.0	*4	≥550	≥795	≥15	≤310	≤32 (HRC)	—
	(1.4507)		SUS329J4L	≤0.030	≤1.00	≤1.50	≤0.040	≤0.030	5.50/7.50	24.00/26.00	2.50/3.50	N:0.08/0.30	≥450	≥620	≥18	≤302	≤32 (HRC)	—	

** S32101: Sold under license from Outokumpu Stainless AB (re. patents on LDX2101® grade) in the Territory (designated countries) .

- * 1 : ≤0.60
- * 2 : N≤0.025, Ti,Nb(Cb),Zr or their combination : 8(C+N)~0.80
- * 3 : N:0.20/0.30, Cu:0.50/1.00, W:0.50/1.00, Cr+3.3Mo+16N≥40
- * 4 : N:0.24/0.32, Cu≤0.50, Cr+3.3Mo+16N≥41

- * 5 : Bending Angle : 180°, Inside Radius t≤9.52 : equal to one half the specimen thickness, 9.52<t≤25.4 : equal to the specimen thickness
25.4<t : not required
- * 6 : Bending Angle : 180°, Inside Radius : equal to the specimen thickness
- * 7 : Bending Angle : 180°, Inside Radius t<8 : equal to one half the specimen thickness, 8≤t : equal to the specimen thickness

Quality Management System (at Yawata Works)

General Purpose Pressure Vessel

Quality System Standard/Specification	Standard/Specification	Grade
ISO9001	Available Standard	Available Grade
ISO9001 (JIS Q9001) (JIS Q1001 Certification System)	JIS G4304	Approved Grade
PED 97/23/EC (PRESSURE VESSEL)	JIS G4304 ASTM A240/A240M ASME SA-240/SA-240M EN 10028-7	Approved Grade
AD2000-W0 (PRESSURE VESSEL)	EN10028-7 AD2000-W2, W10 VdTUV418	Austenitic : Available Grade Austenitic-Ferritic : 1.4410, 1.4462

Offshore Structure

Quality System Standard/Specification	Standard/Specification	Grade
NORSOK M-650	NORSOK M-630	MDS R15 UNS S31254 MDS D45 UNS S31803 UNS S32205 MDS D55 UNS S32750

Ship Classification Societies

Society	Grade	Products
Nippon Kaiji Kyokai (NK)*1	KSUS304, KSUS316L, KSUS316LN e.t.c.	Stainless Steel
Lloyd's Register of Shipping (LR)	LR304L, LR316L, LR316LN e.t.c.	Stainless Steel
Det Norske Veritas (DNV)	NV304L, NV316L, NV316LN e.t.c.	Stainless Steel
Bureau Veritas (BV) Mode I *1	BV304L, BV316L, BV316LN e.t.c.	Stainless Steel
Korean Resister of Shipping (KR)	RSTS304L, RSTS316L, RSTS316LN	Stainless Steel
Germanischer Lloyd (GL)	1.4306 (304N), 1.4541 (321), 1.4404 (316L), 1.4550 (347)	Stainless Steel specified in EN Standard

*1 Manufacturing Process Approved

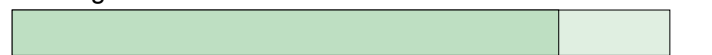
Sizes Available

Ferritic Steels / Martensitic Steels (TYPE 405, 410S, 430, SUS444, NSSC 190L)

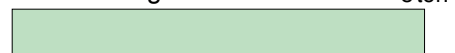
Size

Width (m) Thickness (mm)	1.5	2.0	2.5	3.0	3.5	4.0	4.5
4.0 to less than 4.5 4.0~4.5							
4.5~5.0							
5.0~5.5							
5.5~6.0							
6.0~7.0							
7.0~8.0							
8.0~9.0							
9.0~10.0							
10.0~12.0							
12.0~20.0							
20.0~30.0							
30.0~40.1							
40.1~50.0							
50.0~60.0							
60.0~80.0							
80.0~100.0							
100.0~120.0							
120.0~200.0							

Length



Unit Weight



Minimum Size

Width ≥ 1,219mm, Length ≥ 2,000mm

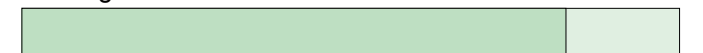
Please contact us when you need other type or size than mentioned above.

- Orders are always acceptable with standard delivery time.
- Orders are acceptable subject to conditions.
- SUS 444, NSSC 190L Orders are always acceptable.
- SUS 444, NSSC 190L Orders are acceptable subject to conditions.

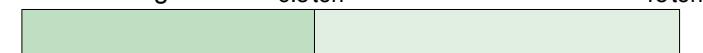
Austenitic Steels ① (TYPE 304, 304L, 321, 347, 309S, 310S)

Width (m) Thickness (mm)	1.5	2.0	2.5	3.0	3.5	4.0	4.5
4.0 to less than 4.5 4.0~4.5							
4.5~5.0							
5.0~5.5							
5.5~6.0							
6.0~7.0							
7.0~8.0							
8.0~9.0							
9.0~10.0							
10.0~12.0							
12.0~18.0							
18.0~30.0							
30.0~40.0							
40.0~45.1							
45.1~50.1							
50.1~55.1							
55.1~60.1							
60.1~70.1							
70.1~80.1							
80.1~90.1							
90.1~101.1							
101.1~110.1							
110.1~120.1							
120.1~200.0							

Length



Unit Weight



Minimum Size

Width ≥ 1,219mm, Length ≥ 2,000mm (heavy plate 2,500mm)

Please contact us when you need other type or size than mentioned above.

Maximum thickness by specific type is as below.
120mm for TYPE 321
45mm for TYPE 347
50mm for TYPE 309S, TYPE 310S

- Orders are always acceptable with standard delivery time.
- Orders are acceptable subject to conditions

Austenitic Steels ② (TYPE 316, 316L, 317L)

■ Size

Width (m) Thickness (mm)	1.5	2.0	2.5	3.0	3.5	4.0	4.5
4.0 to less than 4.5 4.0~4.5	Available	Available	Available	Available	Available	Available	Available
4.5~5.0	Available	Available	Available	Available	Available	Available	Available
5.0~5.5	Available	Available	Available	Available	Available	Available	Available
5.5~6.0	Available	Available	Available	Available	Available	Available	Available
6.0~7.0	Available	Available	Available	Available	Available	Available	Available
7.0~8.0	Available	Available	Available	Available	Available	Available	Available
8.0~9.0	Available	Available	Available	Available	Available	Available	Available
9.0~10.0	Available	Available	Available	Available	Available	Available	Available
10.0~12.0	Available	Available	Available	Available	Available	Available	Available
12.0~18.0	Available	Available	Available	Available	Available	Available	Available
18.0~30.0	Available	Available	Available	Available	Available	Available	Available
30.0~40.0	Available	Available	Available	Available	Available	Available	Available
40.0~50.0	Available	Available	Available	Available	Available	Available	Available
50.0~60.1	Available	Available	Available	Available	Available	Available	Available
60.1~70.1	Available	Available	Available	Available	Available	Available	Available
70.1~80.1	Available	Available	Available	Available	Available	Available	Available
80.1~90.1	Available	Available	Available	Available	Available	Available	Available
90.1~100.1	Available	Available	Available	Available	Available	Available	Available
100.1~110.1	Available	Available	Available	Available	Available	Available	Available
110.1~120.0	Available	Available	Available	Available	Available	Available	Available
120.0~200.0	Available	Available	Available	Available	Available	Available	Available

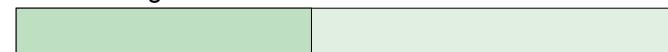
■ Length 12.5m 14m



Orders are always acceptable with standard delivery time.

Orders are acceptable subject to conditions.

■ Unit Weight 6.5ton 15ton



TYPE 317L : Thickness ≤ 50mm

■ Minimum Size Width ≥ 1,219mm, Length ≥ 2,000mm (heavy plate 2,500mm)

Please contact us when you need other type or size than mentioned above.

Austenitic-Ferritic (Dual-phase) Steels (S32304, S31803, S32205, SUS329J3L, NSSC DX1)

■ Size

Width (m) Thickness (mm)	1.5	2.0	2.5	3.0	3.5	4.0	4.5
4.0 to less than 4.5 4.0~4.5	Available	Available	Available	Available	Available	Available	Available
4.5~5.0	Available	Available	Available	Available	Available	Available	Available
5.0~5.5	Available	Available	Available	Available	Available	Available	Available
5.5~6.0	Available	Available	Available	Available	Available	Available	Available
6.0~7.0	Available	Available	Available	Available	Available	Available	Available
7.0~8.0	Available	Available	Available	Available	Available	Available	Available
8.0~9.0	Available	Available	Available	Available	Available	Available	Available
9.0~10.0	Available	Available	Available	Available	Available	Available	Available
10.0~16.0	Available	Available	Available	Available	Available	Available	Available
16.0~18.0	Available	Available	Available	Available	Available	Available	Available
18.0~20.0	Available	Available	Available	Available	Available	Available	Available
20.0~25.0	Available	Available	Available	Available	Available	Available	Available
25.0~30.0	Available	Available	Available	Available	Available	Available	Available
30.0~40.0	Available	Available	Available	Available	Available	Available	Available
40.0~50.0	Available	Available	Available	Available	Available	Available	Available
50.0~60.0	Available	Available	Available	Available	Available	Available	Available
60.0~80.0	Available	Available	Available	Available	Available	Available	Available
80.0~100.0	Available	Available	Available	Available	Available	Available	Available
100.0~200.0	Available	Available	Available	Available	Available	Available	Available

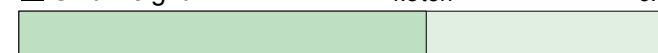
■ Length 12.5m 14m



Orders are always acceptable with standard delivery time.

Orders are acceptable subject to conditions.

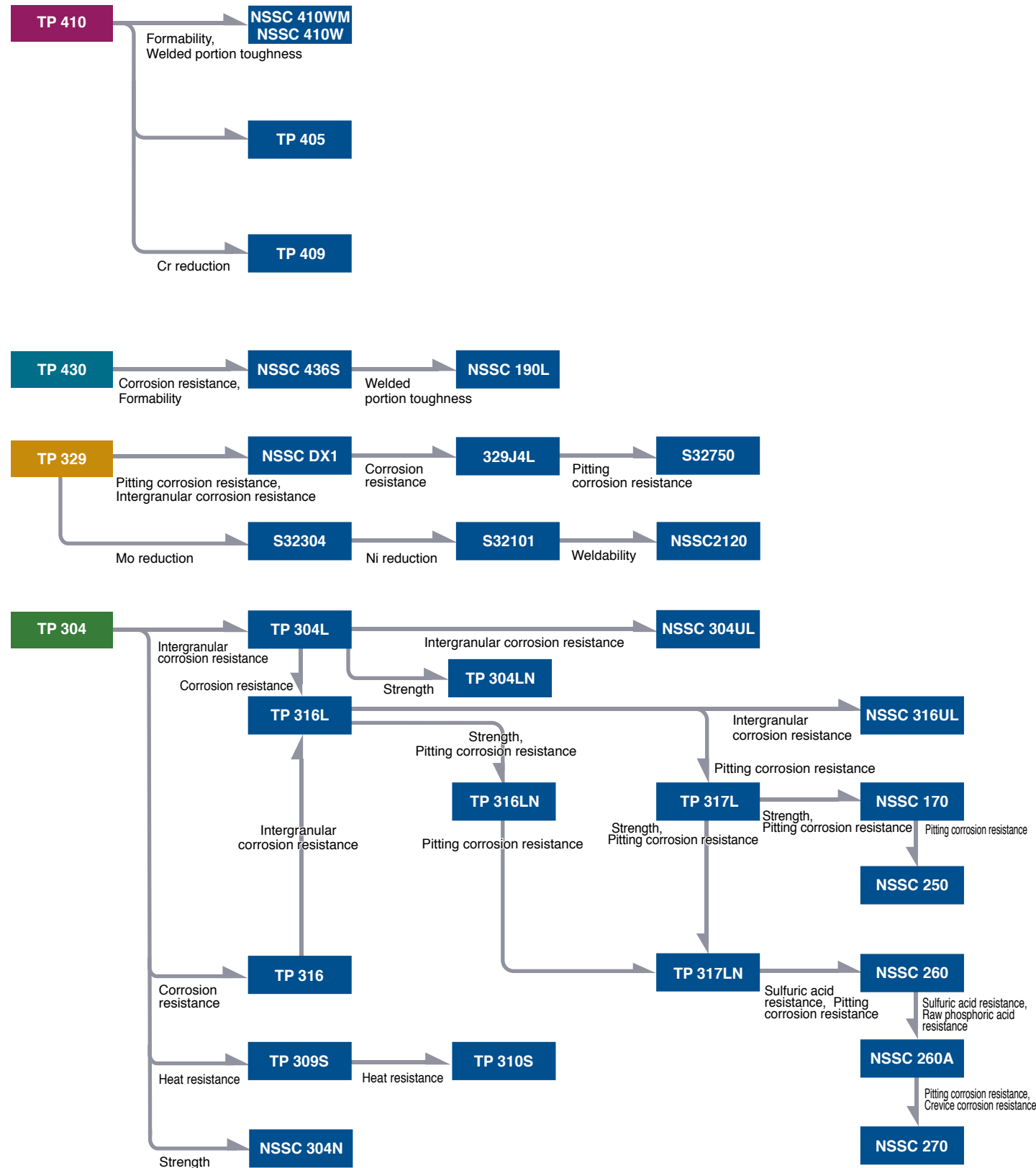
■ Unit Weight 4.5ton 6.5ton



■ Minimum Size Width ≥ 1,219mm, Length ≥ 2,500mm

Please contact us when you need other type or size than mentioned above.

Guide to Selection of Appropriate Grade of NSSC Series Stainless Steels



List of NSSC Series Stainless Steels

Stainless Steel Group	Symbol of Grade (similar grade)	Chemical Composition Mechanical Properties Upper/Tensile Properties Lower/Hardness, (Bend)	Corrosion resistance				Formability/Deep drawability	Strength	Heat-resistance	Weldability	Application examples
			Oxidation resistance	Stress corrosion resistance	Pitting corrosion resistance	Intergranular corrosion resistance					
Austenitic Steels	NSSC 270 (S31254)	20Cr-18Ni-6Mo-0.7Cu-0.2N-LC 0.2YS \geq 300, TS \geq 650, EL \geq 35 HBW \leq 223, HRB \leq 96	○	○	○	○	○				Seawater water conversion device, Chimney, Salt manufacture plant, Food manufacture plant
	NSSC 260A (—)	22Cr-16Ni-3.5Mo-2Cu-0.2N-LC 0.2YS \geq 315, TS \geq 600, EL \geq 35 HBW \leq 230, HRB \leq 95	○		○	○	○				Chemical tanker, Chimney, Sulfuric acid plant
	NSSC 260 (—)	20Cr-15Ni-3Mo-1.5Cu-0.2N-LC 0.2YS \geq 275, TS \geq 550, EL \geq 35 HBW \leq 217, HRB \leq 95	○		○	○	○				Chimney, Sulfuric acid plant
	NSSC 250	25Cr-18Ni-2.5Mo-0.3N-LC 0.2YS \geq 345, TS \geq 690, EL \geq 40 HBW \leq 250, HRB \leq 100	○	○	○	○	○				Chemical plant, Food manufacture plant
	NSSC 170 (SUS 317J2)	25Cr-13Ni-0.9Mo-0.3N 0.2YS \geq 345, TS \geq 690, EL \geq 40 HBW \leq 250, HRB \leq 100			○		○				Exhaust gas desulfurizer, Waste fluid processor, High temperature usage
	NSSC 304ULC (TYPE304L)	18Cr-10Ni-ULC 0.2YS \geq 175, TS \geq 480, EL \geq 40 HBW \leq 187, HRB \leq 90					○				Nuclear fuel reprocess equipment
	NSSC 316ULC (TYPE316L)	17Cr-15Ni-2Mo-ULC 0.2YS \geq 175, TS \geq 480, EL \geq 40 HBW \leq 187, HRB \leq 90					○				Nuclear fuel reprocess equipment
Austenitic-Ferritic Steels	NSSC 304N (TYPE304N)	18Cr-8Ni-0.2N 0.2YS \geq 345, TS \geq 690, EL \geq 40 HBW \leq 250, HRB \leq 100							○		Equipment which needs higher strength than Type 304
	NSSC DX1 (S31803)	22Cr-5Ni-3Mo-0.13N-LC 0.2YS \geq 450, TS \geq 620, EL \geq 25 HBW \leq 290		○	○				○		Chemical plant, Energy related plant, Chemical tanker
Ferritic Steels	NSSC 190L (SUS 444)	19Cr-2Mo-Nb-V-ULC-LN 0.2YS \geq 275, TS \geq 410, EL \geq 22 HBW \leq 217, HRB \leq 96, Bend ^{*3}		○	○	○				○	Chemical plant, Hot water tank
	NSSC 436S (SUS 436L)	17Cr-1.2Mo-0.2Ti-LC-LN 0.2YS \geq 205, TS \geq 390, EL \geq 25 HBW \leq 162, HRB \leq 85, Bend ^{*2}			○	○					Automotive exhaust system part, Kitchen equipment, Household electric appliances part, Building interior material, Gate
	NSSC 410WM (SUS 410L) ^{*1}	11Cr-LC-LN-Ni 0.2YS \geq 315, TS \geq 430, EL \geq 20 HBW \leq 230, Bend ^{*4}								○	Marine container frame material
	NSSC 410W (SUS 410L)	12Cr-LC 0.2YS \geq 195, TS \geq 360, EL \geq 22 HBW \leq 183, HRB \leq 88, Bend ^{*2}								○	Heat-resistant equipment
	NSSC 409L (SUH 409L)	11Cr-Ti-LC 0.2YS \geq 175, TS \geq 360, EL \geq 25 HBW \leq 183, Bend ^{*2}								○	Equipment related to automotive exhaust system

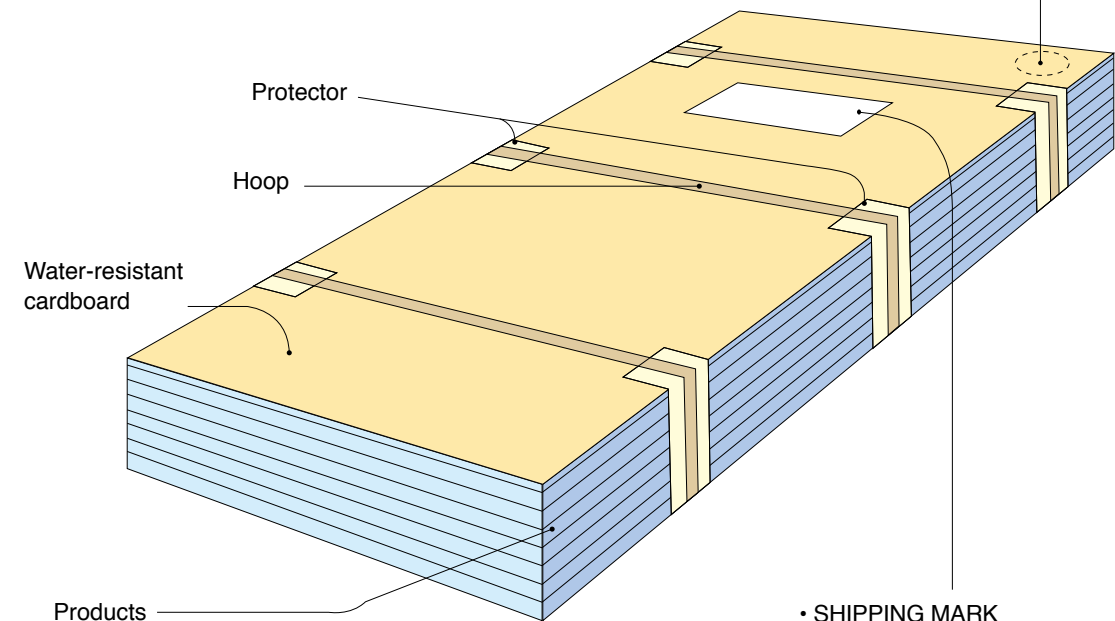
^{*1} Please consult us to need discussion before your order.
^{*2} Bending Angle: 180°, Inside Radius: equal to the specimen thickness
^{*3} Bending Angle: 180°, Inside Radius $t < 8$: equal to one half the specimen thickness, $8 \leq t$: equal to the specimen thickness
^{*4} Bending Angle: 180°, Inside Radius $4.0 \leq t < 5.0$: equal to the specimen thickness, $5.0 < t \leq 6.4$: equal to one and a half the specimen thickness, $6.4 < t$: equal to twice the specimen thickness

Marking and Packaging

[Example]

Record on the actual product

Grade _____ A240 TYPE 304
 Product Size _____ 12×2500×6100
 Heat Number _____ Heat No. E74800
 Product Number (Plate Number) _____ Plate No. 123456—01
 Works name _____ NSSC YAWATA
 Finish _____ No.1



- SHIPPING MARK
- GRADE
- SIZE
- FINISH
- NO. OF PLATE
- NET MASS
- GROSS MASS
- C/NO.
- NIPPON STEEL & SUMIKIN
STAINLESS STEEL CORP.
- MADE IN JAPAN

Precautions in Use

If stainless steel sheets are improperly handled or used, they cannot fully exhibit their characteristic features. When handling or using stainless steel sheets, attention should be paid to the following points.

● Storage and Unloading

1. If stainless steel sheets get wet during unloading or storage, rusting will occur. Accordingly, stringent care should be taken to avoid their unloading on rainy days or their getting wet by seawater. Storage at high humidity or in a sulfur-dioxide atmosphere should be avoided. Storage in a dry, clean place is recommended.
2. Damaged packing paper should be repaired.

● Handling SDS is available on NSSC website or by contacting NSSC offices.

1. Because cutting bundling and packaging hoops (bands) may touch your face and your body, be careful about bouncing hoops and hoop-tips.
2. To avoid injury, do not handle unpacked sheets by bare hand. In handling these sheets, particularly with Cut-ends and cutting chips with burr may be injurious, careful handling and use of protective gloves are recommended.

Directions for Ordering

Stainless steel sheet and strip can demonstrate their optimum characteristic performances when the appropriate steel grade is properly selected in terms of application, design, fabrication and other similar conditions. Please place your orders after obtaining the advice of Nippon Steel & Sumikin Stainless Steel regarding the above conditions.

● When placing orders

Please include the following information as specifically as possible.

1. Standard to be applied
for example, JIS G 4304, ASTM, ASME, EN, any special specification, etc.
2. Grade
for example, JIS (SUS No.), ASTM, ASME (Type No.), etc.
3. Surface Finish
as heat-treated or not, pickled or not, Buff finish No., one or both side(s)
4. Size
Thickness×Width×Length (availability of enlarged scale)
5. Volume
Number of plate(s) and weight
6. Usage and how to be processed
Name of plant, Temperature to be applied, Pressure, Kind of liquid or gas applied, Method and conditions of processing, Method of welding, etc.
7. Delivery time

● Technical services

Please feel free to consult Nippon Steel & Sumikin Stainless Steel's headquarters as to technical matters such as grade selection and applications of stainless steel sheet and strip. Nippon Steel & Sumikin Stainless Steel is ready to offer appropriate technical services on the basis of extensive research and expertise and achievements accumulated over long years of technical services.

MEMO
